

UNIT TYPE "C" SERIES
FLOOR PLANS

- △ PC-121 & 122, 7-15-91
C & G LETTER #4
7-15-91
- △ PC-124, 7-15-91
C & G LETTER #4
7-15-91
- △ BFI RESPONSE #33
5-11-91
- △ BFI RESPONSE #29
5-21-91
- △ PC-127, 4-28-91
C & G LETTER #7
4-28-91
- △ PC-121 & 122, 3-28-91
C & G LETTER #6
3-28-91
- △ PC-121, 122 & 123, 3-28-91
C & G LETTER #6
3-28-91

CONSTRUCTION
EDITION
25 SEP 1992



This work was prepared by the undersigned in accordance with the provisions of the laws of the State of New York, and I am a duly Licensed Professional Engineer in the State of New York.

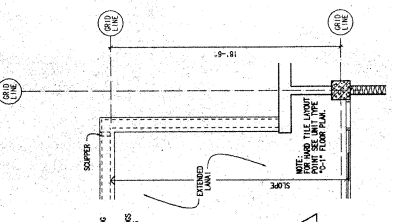
Project No. 89055.01
Date: 01 FEB 1991

PARTITION NOTES:

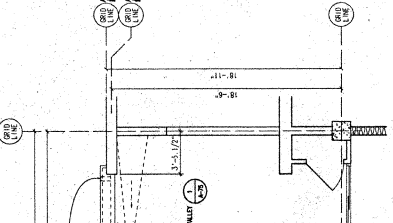
1. TYPICAL PARTITIONS AT 3/4" METAL STUDS AT STEIN FLOOR, WHERE REPORT EXCEEDS 10'-0" SHALL BE 2x4 WOOD STUDS @ 16" O.C.
2. PARTITIONS WITH BRICKER BOARD AND HARD TILE SHALL BE AS FOLLOWS:
A. METAL STUDS OF ALL WIDTHS AT GROUND FLOOR THRU STEIN FLOOR SHALL BE 2x4 WOOD STUDS @ 16" O.C.
B. METAL STUDS AT THE STEIN FLOOR, WHICH EXCEEDS 11'-0" IN HEIGHT, SHALL BE 2x6 @ 16" O.C.
C. 1 1/2" METAL STUDS SHALL BE 2x6 @ 16" O.C.
3. BRICKER BOARD SHALL BE 1/2" THICK, 1/4" GYP BOARD, WHERE REPORT EXCEEDS 11'-0".
4. BRICKER BOARD SHALL BE 1/2" THICK, 1/4" GYP BOARD, WHERE REPORT EXCEEDS 11'-0".
5. BRICKER BOARD SHALL BE 1/2" THICK, 1/4" GYP BOARD, WHERE REPORT EXCEEDS 11'-0".
6. BRICKER BOARD SHALL BE 1/2" THICK, 1/4" GYP BOARD, WHERE REPORT EXCEEDS 11'-0".

WALL/PARTITION LEGEND:

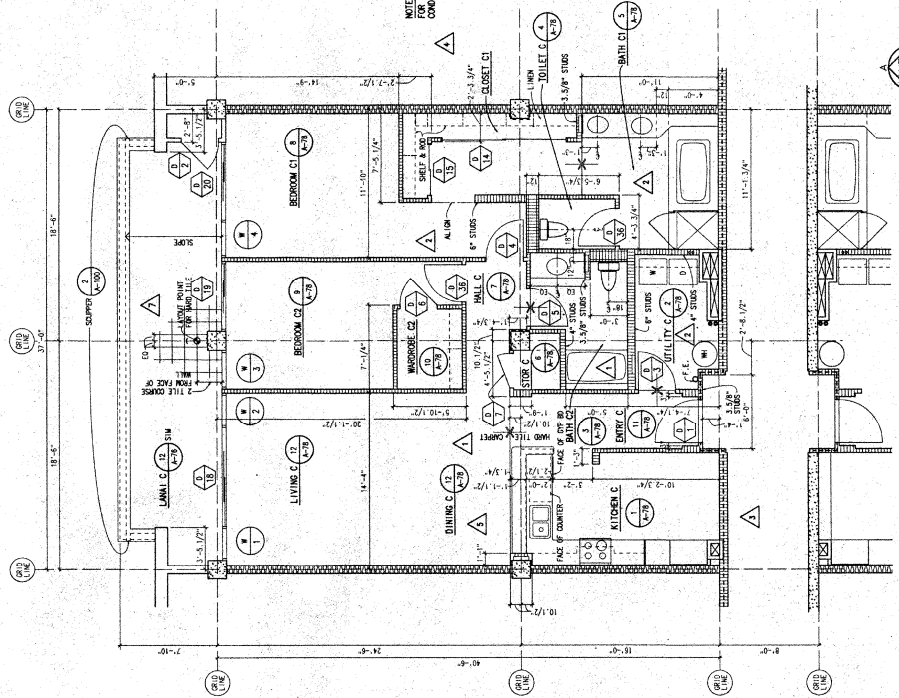
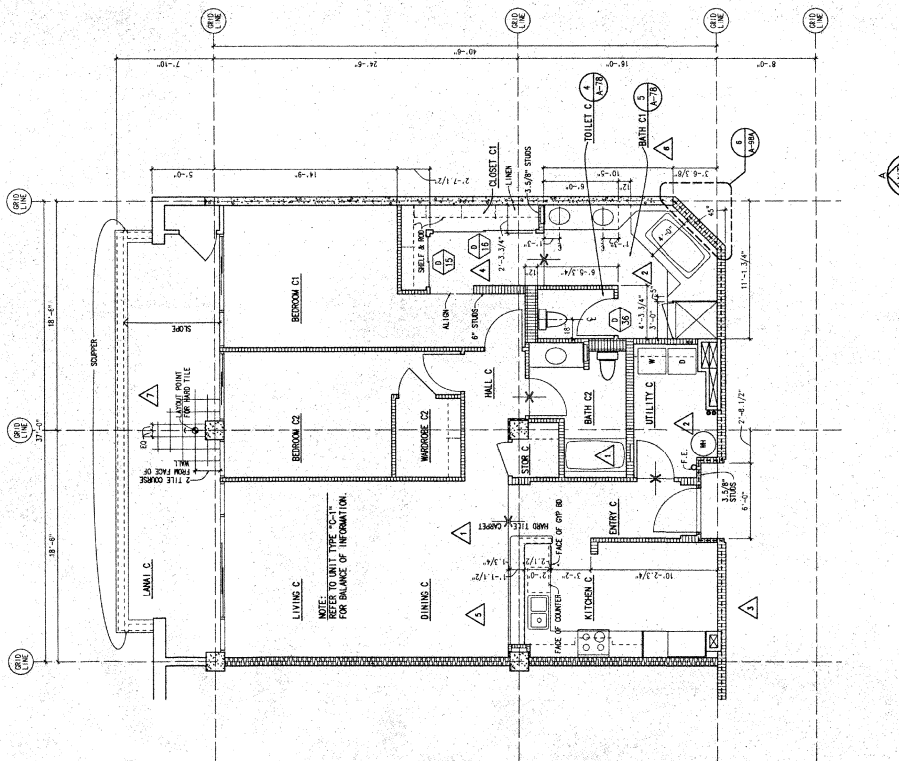
- CONCRETE
- CONCRETE MOUNT UNIT (CMU) SOULID GROUT
- BRICKER BOARD: 1/2" TYPE "X" GYP BOARD OVER 6" PLY SHEET
DOUBLE ROW OF 2x4 WOOD STUDS WITH 3/4" GYPSUM BOARD INSIDE
STUDS @ 16" O.C. WITH SOUND ATTENUATION BLANKET
- 1/2" TYPE "X" GYP BOARD ON ONE SIDE WITH SOUND ATTENUATION BLANKET
ON OTHER SIDE WITH 3/4" GYPSUM BOARD ON EACH SIDE @ 16" O.C.
- 1/2" TYPE "X" GYP BOARD ON ONE SIDE WITH SOUND ATTENUATION BLANKET
ON OTHER SIDE WITH 3/4" GYPSUM BOARD ON EACH SIDE @ 16" O.C.
- 1/2" TYPE "X" GYP BOARD ON ONE SIDE WITH SOUND ATTENUATION BLANKET
ON OTHER SIDE WITH 3/4" GYPSUM BOARD ON EACH SIDE @ 16" O.C.
- 1/2" TYPE "X" GYP BOARD ON ONE SIDE WITH SOUND ATTENUATION BLANKET
ON OTHER SIDE WITH 3/4" GYPSUM BOARD ON EACH SIDE @ 16" O.C.
- 1/2" TYPE "X" GYP BOARD ON ONE SIDE WITH SOUND ATTENUATION BLANKET
ON OTHER SIDE WITH 3/4" GYPSUM BOARD ON EACH SIDE @ 16" O.C.
- 1/2" TYPE "X" GYP BOARD ON ONE SIDE WITH SOUND ATTENUATION BLANKET
ON OTHER SIDE WITH 3/4" GYPSUM BOARD ON EACH SIDE @ 16" O.C.



PARTIAL FLOOR PLAN UNIT TYPE "CR-3"
UNIT NO.: 3311
1/4" = 1'-0"



PARTIAL FLOOR PLAN UNIT TYPE "C-2"
UNIT NO.: 1335, 2335, & 3335
1/4" = 1'-0"



FLOOR PLAN UNIT TYPE "C1-1" ("C1R-1" SIM REV)
1/4" = 1'-0"

FLOOR PLAN UNIT TYPE "C-1" ("C1R-1" SIM REV)
1/4" = 1'-0"

