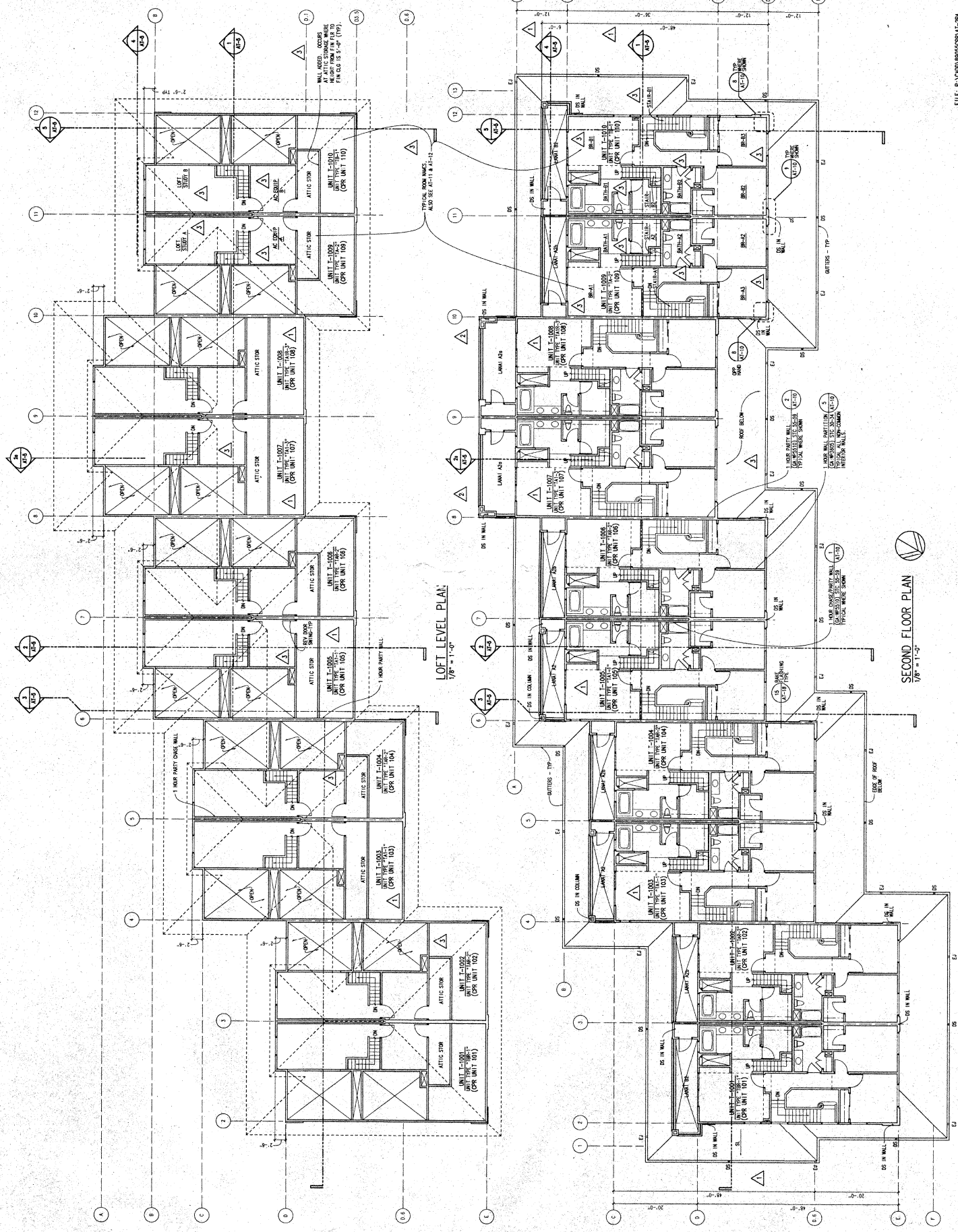


- NOTES:
1. SEE ARCHITECT'S WORKING SET.
 2. FOR FINISHES, SEE ARCHITECT'S WORKING SET.
 3. FOR FINISHES, SEE ARCHITECT'S WORKING SET.

FIRST FLOOR PLAN
1/8" = 1'-0"



LOFT LEVEL PLAN
 1/8" = 1'-0"

SECOND FLOOR PLAN
 1/8" = 1'-0"

- BUILDING UPPER ROOF
- ROOF DETAILS

PC-223, 7-17-91
7-17-91
7-17-91

PC-122, 6-05-91
E & G LETTER #15
6-05-91

CONSTRUCTION
EDITION
25 SEP 1992

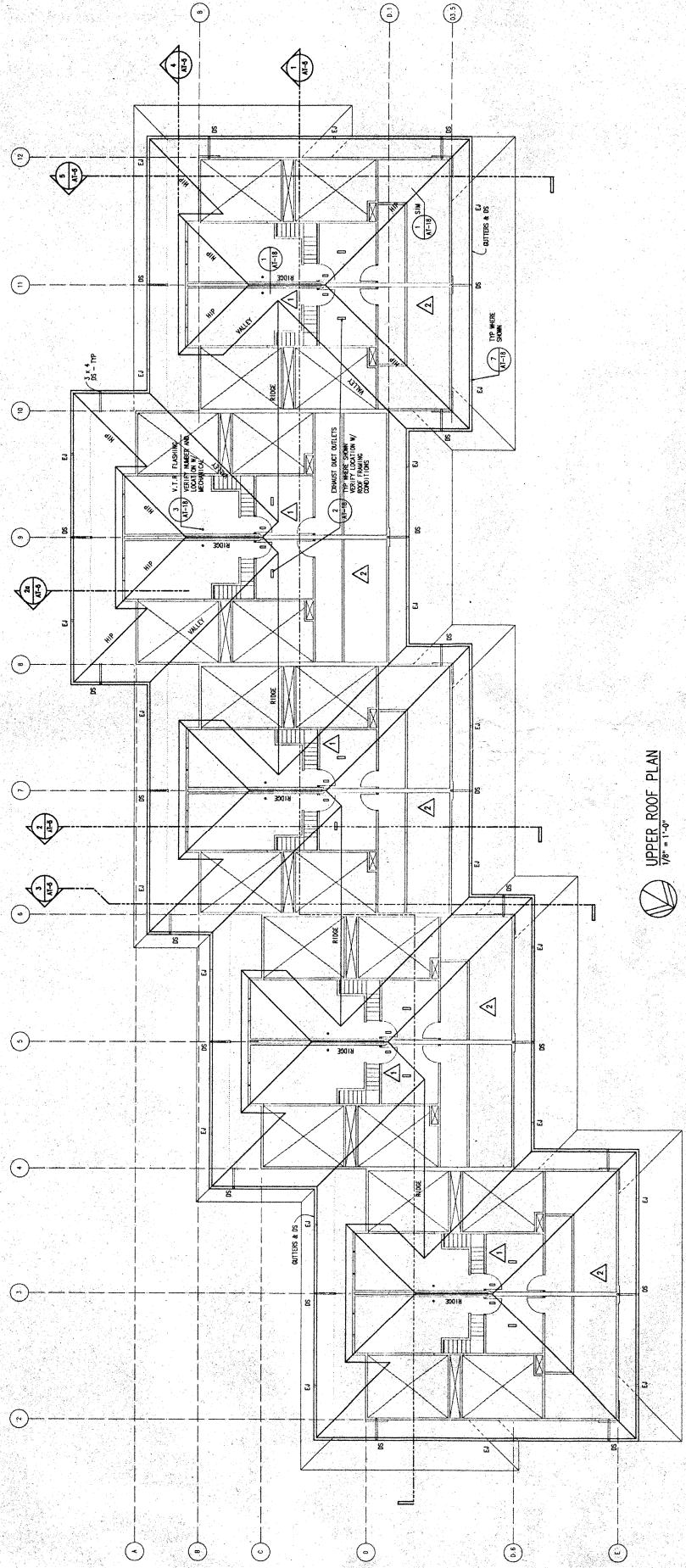


This work was prepared by the undersigned in accordance with the provisions of the California Engineering and Architecture Act of 1967, Chapter 1049, as amended. The undersigned is duly licensed and qualified to perform the services herein.

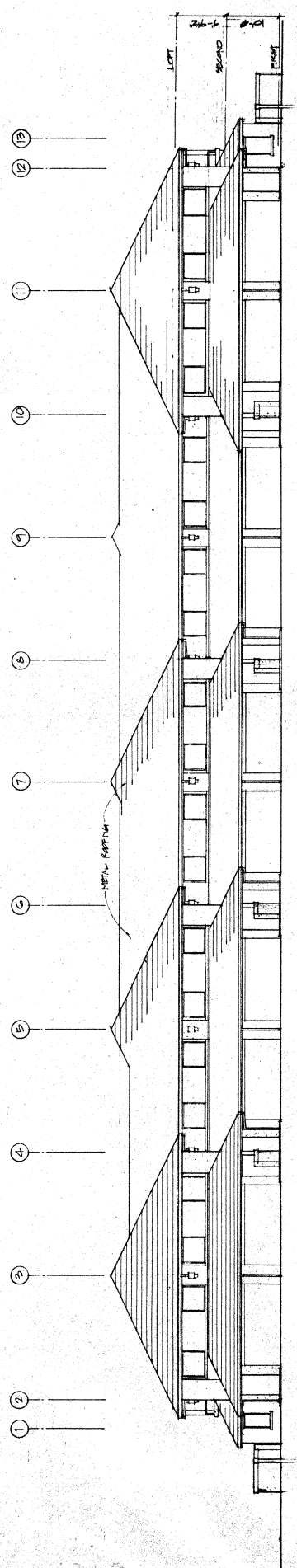
Project No. 88255.01
Date 01 FEB 1991

A1-3
Sheet 29

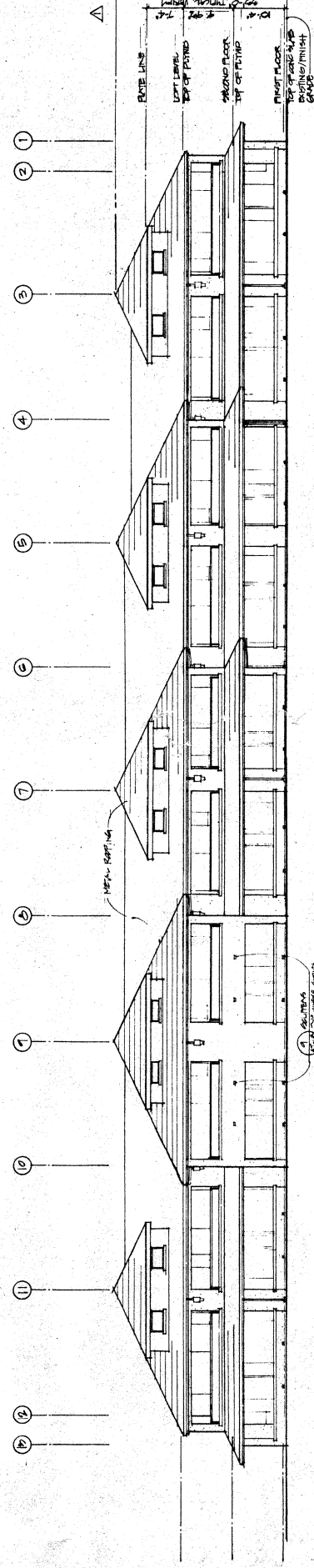
FILE: P:\DOD\BASSO\PMAT-34
PLOT DATE: 25 SEP 1992



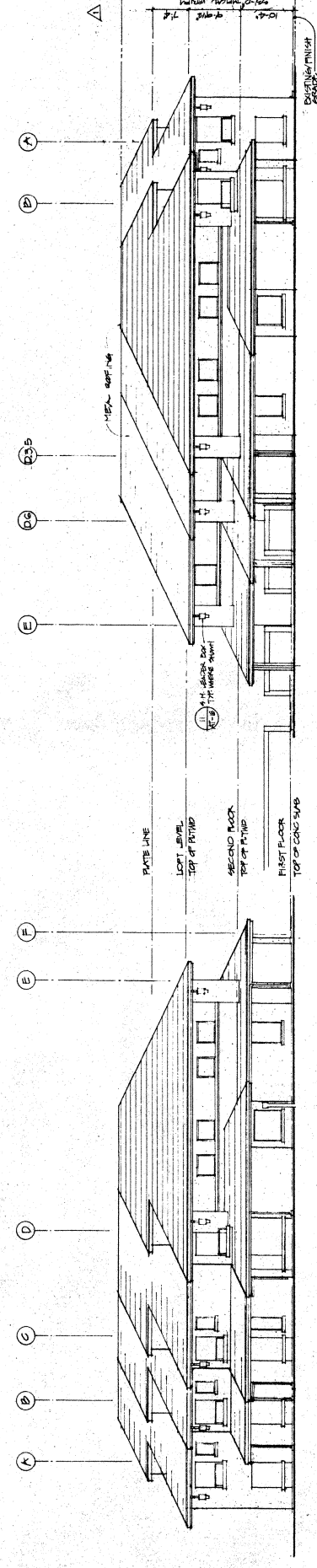
UPPER ROOF PLAN
1/8" = 1'-0"



NORTH ELEVATION
1/8" = 1'-0"

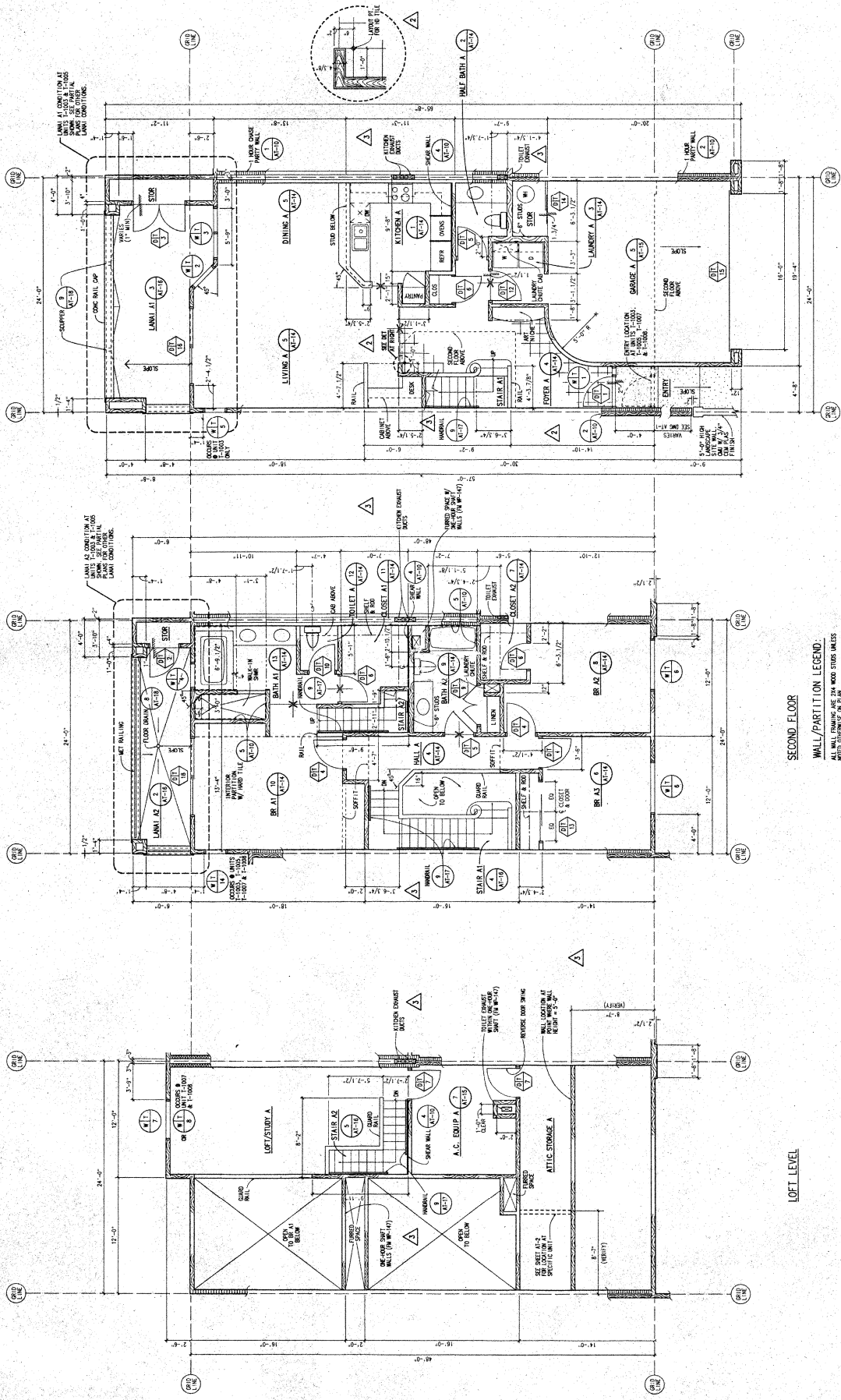


SOUTH ELEVATION (VIEW FROM MARINA)
1/8" = 1'-0"



EAST ELEVATION
1/8" = 1'-0"

WEST ELEVATION
1/8" = 1'-0"



FIRST FLOOR
1 UNIT TYPE "TA"
1/4" = 1'-0"

- DETAIL REFERENCE
- 1 V-10
 - 2 V-11
 - 3 V-12
 - 4 V-13
 - 5 V-14
 - 6 V-15
 - 7 V-16
 - 8 V-17
 - 9 V-18
 - 10 V-19

SECOND FLOOR
WALL/PARTITION LEGEND:
ALL WALL FINISHES ARE 2" X 4" WOOD STUDS UNLESS NOTED OTHERWISE.
DIMENSIONS ARE FROM GRID LINES OR FACE OF STUD UNLESS OTHERWISE NOTED TO GRID LINES OR FACE OF STUD UNLESS OTHERWISE NOTED.

- 1 PARTITION WALL (1 HOUR) ON #1000, STC 55-50
- 2 PARTY WALL (1 HOUR) ON #1000, STC 55-50
- 3 TYPICAL INTERIOR PARTITION (1 HOUR) ON #1000, STC 55-50
- 4 INTERIOR SQUEAK PARTITION (1 HOUR) ON #1000, STC 55-50
- 5 INTERIOR PARTITION (1 HOUR) WITH WOOD TILE ON #1000
- 6 TYPICAL EXTERIOR WALL (1 HOUR) ON #1000
- 7 TYPICAL EXTERIOR SQUEAK WALL (1 HOUR) ON #1000

LOFT LEVEL

NOTE:
UNIT TYPE "TAP" SIMILAR - RE-REVED.

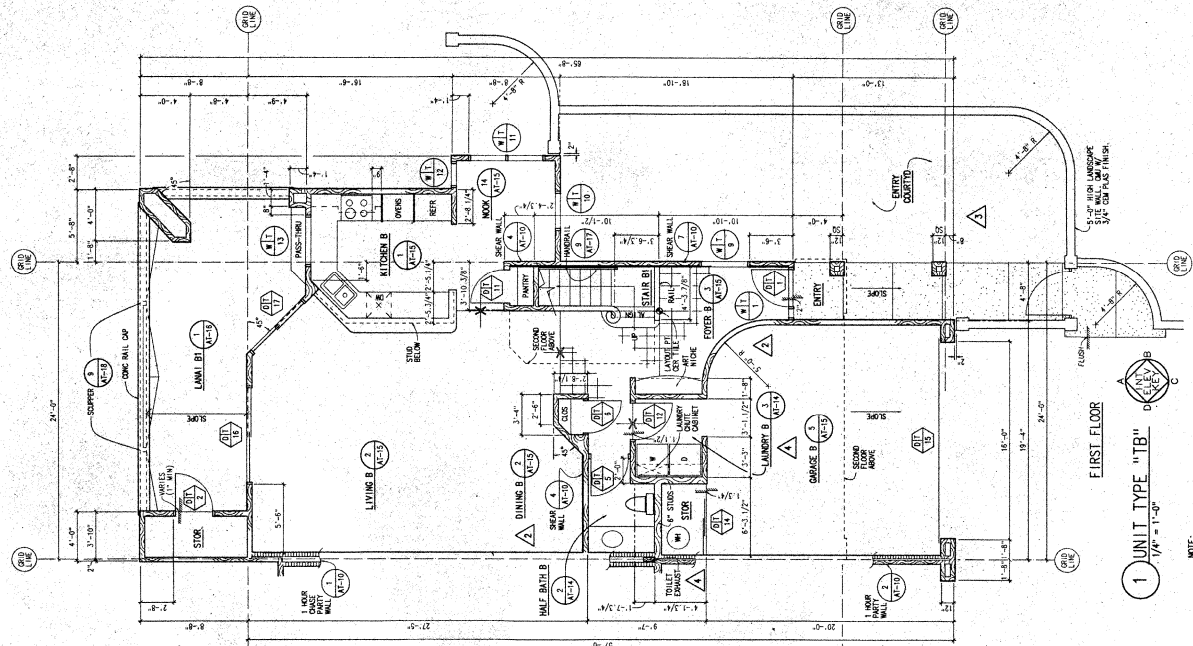


- △ PC-223, 7-17-91
C & C LETTER #1
7-17-91
- △ PC-117, 6-05-91
C & C LETTER #1
6-05-91
- △ PC-183, 5-17-91
C & C LETTER #1
5-17-91
- △ PC-142, 4-04-91
C & C LETTER #1
5-17-91

CONSTRUCTION
 EDITION
 25 SEPT 1992

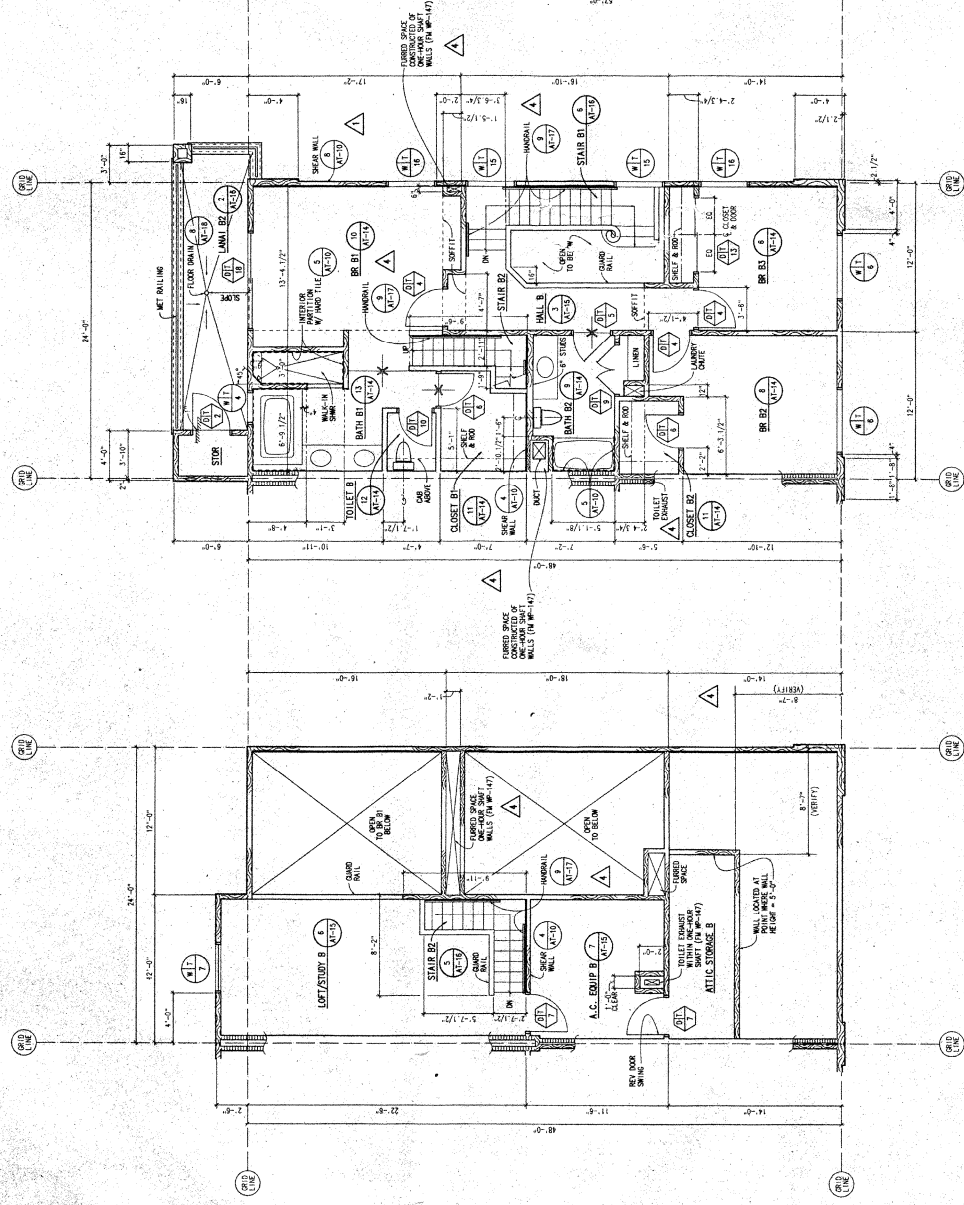


FILE: P:\CAD\92\SSP\AT-1294
 PLOT DATE: 25 SEPT 1992



1 UNIT TYPE "TB"
 1/4" = 1'-0"

NOTE:
 UNIT TYPE "TB" SIMILAR - REVISOR



SECOND FLOOR

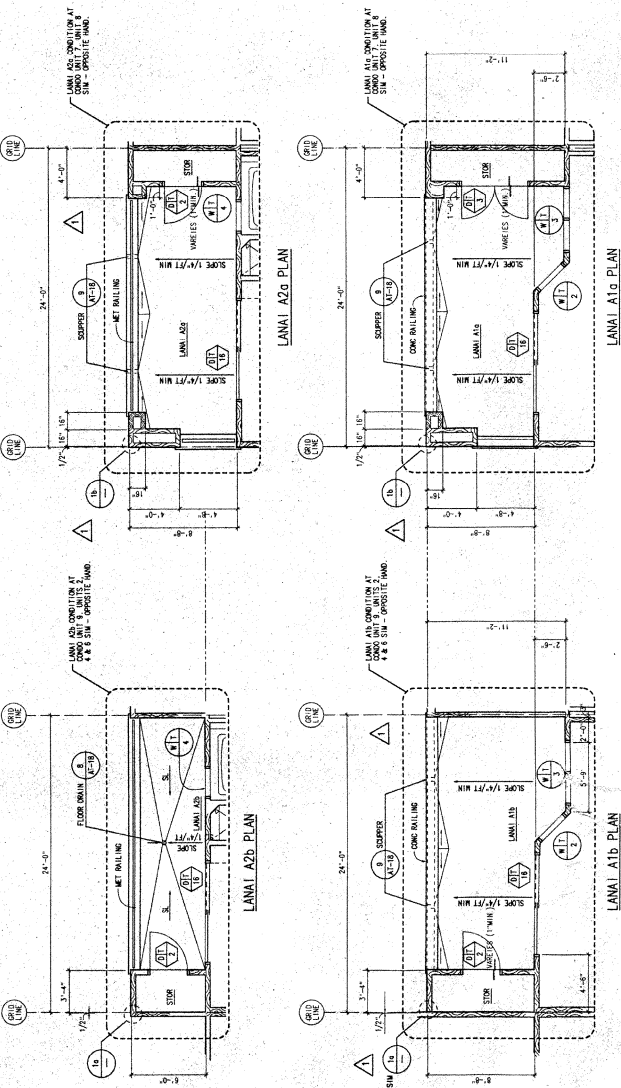
LOFT LEVEL

WALL/PARTITION LEGEND:

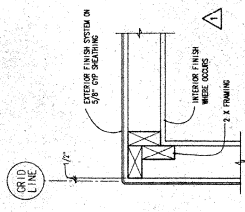
ALL WALL FINISHES ARE 2X4 WOOD STUDS UNLESS NOTED OTHERWISE ON PLAN.
 FINISHES ON FACE OF WALLS TO BE INDICATED BY NOTES TO SHOW TYPES ON FACE OF STUD AND/OR FINISHES NOTED

- DETAIL REFERENCE:
- △ (A-C-37)
 - △ (A-C-38)
 - △ (A-C-39)
 - △ (A-C-40)
 - △ (A-C-41)
 - △ (A-C-42)
 - △ (A-C-43)
 - △ (A-C-44)
 - △ (A-C-45)

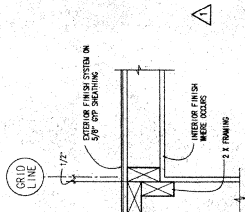
- ===== INTERIOR SUGAR WALL (1 HOUR) ON PERIMETER, SEE 5-2-91
- ===== INTERIOR SUGAR WALL (1 HOUR) ON PERIMETER, SEE 5-2-91
- ===== TYPICAL INTERIOR PARTITION (1 HOUR) ON PERIMETER
- ===== INTERIOR SUGAR PARTITION (1 HOUR) ON PERIMETER
- ===== INTERIOR PARTITION (1 HOUR) WITH HARD TILE ON PERIMETER
- ===== TYPICAL EXTERIOR WALL (1 HOUR) ON PERIMETER
- ===== TYPICAL EXTERIOR SUGAR WALL (1 HOUR) ON PERIMETER



1 PARTIAL LANAI PLANS
 1/4" = 1'-0"



1a FRAMING DETAIL - PLAN SECTION
 1/12" = 1'-0"



1b FRAMING DETAIL - PLAN SECTION
 1/12" = 1'-0"

ROOM FINISH SCHEDULE		FLOOR	BASE	WALL	CEILING	REMARKS
UNIT TYPE	UNIT TYPE					
FOYER A / HALL A		HARD TILE	WOOD	EXTERIOR GYPSUM BOARD	EXTERIOR GYPSUM BOARD	
HALF BATH A		CONCRETE (PAVED)	WOOD	EXTERIOR FINISH SYSTEM	EXTERIOR GYPSUM BOARD	
LANAI A		CONCRETE (PAVED)	WOOD	EXTERIOR FINISH SYSTEM	EXTERIOR GYPSUM BOARD	
GRABER A		CONCRETE (PAVED)	WOOD	EXTERIOR FINISH SYSTEM	EXTERIOR GYPSUM BOARD	
KITCHEN A		CONCRETE (PAVED)	WOOD	EXTERIOR FINISH SYSTEM	EXTERIOR GYPSUM BOARD	
DINING A		CONCRETE (PAVED)	WOOD	EXTERIOR FINISH SYSTEM	EXTERIOR GYPSUM BOARD	
LIVING A		CONCRETE (PAVED)	WOOD	EXTERIOR FINISH SYSTEM	EXTERIOR GYPSUM BOARD	
LANAI-A1		CONCRETE (PAVED)	WOOD	EXTERIOR FINISH SYSTEM	EXTERIOR GYPSUM BOARD	
LANAI-A2		CONCRETE (PAVED)	WOOD	EXTERIOR FINISH SYSTEM	EXTERIOR GYPSUM BOARD	
LANAI-A2a		CONCRETE (PAVED)	WOOD	EXTERIOR FINISH SYSTEM	EXTERIOR GYPSUM BOARD	
LANAI-A2b		CONCRETE (PAVED)	WOOD	EXTERIOR FINISH SYSTEM	EXTERIOR GYPSUM BOARD	
LANAI-A1a		CONCRETE (PAVED)	WOOD	EXTERIOR FINISH SYSTEM	EXTERIOR GYPSUM BOARD	
LANAI-A1b		CONCRETE (PAVED)	WOOD	EXTERIOR FINISH SYSTEM	EXTERIOR GYPSUM BOARD	
LOFT / STUDY A		CONCRETE (PAVED)	WOOD	EXTERIOR FINISH SYSTEM	EXTERIOR GYPSUM BOARD	
A.C. EQUIP A		CONCRETE (PAVED)	WOOD	EXTERIOR FINISH SYSTEM	EXTERIOR GYPSUM BOARD	
ATTIC STOR. A		CONCRETE (PAVED)	WOOD	EXTERIOR FINISH SYSTEM	EXTERIOR GYPSUM BOARD	
FOYER B / HALL B		HARD TILE	WOOD	EXTERIOR FINISH SYSTEM	EXTERIOR GYPSUM BOARD	
HALF BATH B		CONCRETE (PAVED)	WOOD	EXTERIOR FINISH SYSTEM	EXTERIOR GYPSUM BOARD	
LANAI B		CONCRETE (PAVED)	WOOD	EXTERIOR FINISH SYSTEM	EXTERIOR GYPSUM BOARD	
GRABER B		CONCRETE (PAVED)	WOOD	EXTERIOR FINISH SYSTEM	EXTERIOR GYPSUM BOARD	
KITCHEN B		CONCRETE (PAVED)	WOOD	EXTERIOR FINISH SYSTEM	EXTERIOR GYPSUM BOARD	
HALL B		CONCRETE (PAVED)	WOOD	EXTERIOR FINISH SYSTEM	EXTERIOR GYPSUM BOARD	
DINING B		CONCRETE (PAVED)	WOOD	EXTERIOR FINISH SYSTEM	EXTERIOR GYPSUM BOARD	
LIVING B		CONCRETE (PAVED)	WOOD	EXTERIOR FINISH SYSTEM	EXTERIOR GYPSUM BOARD	
LANAI B1		CONCRETE (PAVED)	WOOD	EXTERIOR FINISH SYSTEM	EXTERIOR GYPSUM BOARD	
LANAI B2		CONCRETE (PAVED)	WOOD	EXTERIOR FINISH SYSTEM	EXTERIOR GYPSUM BOARD	
LANAI B3		CONCRETE (PAVED)	WOOD	EXTERIOR FINISH SYSTEM	EXTERIOR GYPSUM BOARD	
LANAI B4		CONCRETE (PAVED)	WOOD	EXTERIOR FINISH SYSTEM	EXTERIOR GYPSUM BOARD	
LOFT / STUDY B		CONCRETE (PAVED)	WOOD	EXTERIOR FINISH SYSTEM	EXTERIOR GYPSUM BOARD	
A.C. EQUIP B		CONCRETE (PAVED)	WOOD	EXTERIOR FINISH SYSTEM	EXTERIOR GYPSUM BOARD	
ATTIC STOR. B		CONCRETE (PAVED)	WOOD	EXTERIOR FINISH SYSTEM	EXTERIOR GYPSUM BOARD	